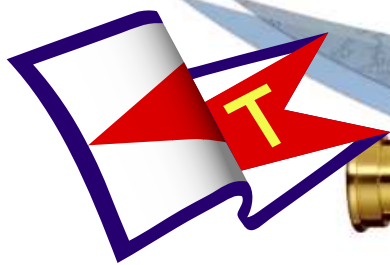


Tammany Yacht Club

SpyGlass



www.TammanyYachtClub.org

1196 Harbor Drive, Slidell, LA

December 2008





Commodore's Corner

I can't the end of the year is already here. I have enjoyed the honor of being your commodore and appreciate all of the support I have received from our membership. Special thanks to the board and the committee heads for all of their work, especially Scott and Val.

Also thanks to Ann and all of the first mates for all of the things they do for the club.

The island party was probably the best party of the year. If you missed it, shame on ya. The food, band, games, and decorations were great. Thanks to all those that helped to decorate and brought food.

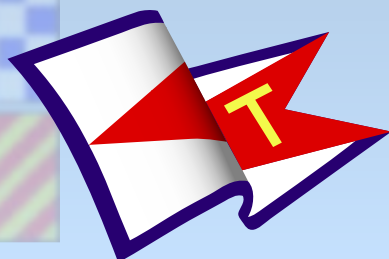
We will be having quite a few rentals in December. Please be patient! This is a good source of income for us and with membership being down, we need the money. It appears that this will slow down after the first of the year.

As of the first of December, we will have a new club manager. Calan MacNeil has agreed to accept this position and we wish her well in her efforts. She is well qualified having worked at Copeland's Restaurant for over ten years. If you haven't met her, come by the club and introduce yourselves. She will be tending bar on Wednesday and Thursday nights as usual.

As you know, there will be a new board taking over the first of the year and J.B. and I want to wish them all the best. There are challenging times ahead for us. The main goal is to increase our membership, so if anybody has any new ideas, please let us know.

And last, I would like to thank my lovely wife for all the hard work she has put in this year. I couldn't have done this without all of your efforts. Thanks a bunch!

That's it folks! It's been fun. See you at the club





KBAY MARINE GROUP
A Division of Bay Sails, Inc.

104 Marina Del Ray Blvd.
Madisonville, LA 70447
Ph 985-845-9827
Fax 985-845-9837
Marina Del Ray
<http://www.baymarine.com>

YACHT & BOAT SALES
POWER & SAIL



YACHT & NAUTICAL CENTER

Embroidered Apparel
Personalized Nautical Gifts
Ship's Store




Mary Boshart - Vice President



First Mates



Ahoy from First Mates Corner – Ann Courrege, President

First Mates will have their regular board meeting on Thursday, December 4th, at 7:00 P.M., at Tammany Yacht Club.

Our board members are:

PRESIDENT:	ANN COURREGE – 646-0648
VICE-PRESIDENT:	J B BRYAN ILGENFRITZ - 645-8637
SECRETARY:	GAIL DIAMOND – 643-4627
TREASURER:	RAE ANN NORMAND – 643-4222
MEMBERS-AT-LARGE:	KATHY HEBERT – 504-236-7475
	CAROLE LANATA – 781-6442
	CAROL WHITED – 718-4215

The Tree Trimming the Christmas will be December 4th, 6:30 P.M., at the club.

Our Christmas Luncheon will be Saturday, December 6th, at Jasmine's, 1768 Front Street, Slidell. The cost will be \$18.00 per person and this includes tax and gratuity. The choices are:

Chicken Chasseur – chicken with a light red sauce with mushrooms, shallots, garlic, etc.
 Veal Milanese – panned veal sautéed in a lemon butter sauce
 Tilapia Almandine – white fish sautéed with wine and lemon butter sauce
 Petit Filet with mushroom sauce

The entree above are served with salad, potato, and fresh vegetable. Chocolate Mousse for dessert, and coffee, tea, ice tea, or soda.

If you will be attending the luncheon, you will need to mail your check to Rae Ann prior to November 24th.

At the luncheon we will be electing our new officers for the coming year.

If you should know any mates that would like to join “The First Mates”, please let me know.

Also, you need to be thinking about who you would like to be your new “Sweetheart of the Year.”



2008 Island Party!





A Special Thank You To:

Pontchartrain

ACE Hardware

985-643-4672 ~ 3320 Pontchartrain Dr ~ Slidell, LA 70458

Sponsor of Tammany Yacht Club's Junior Sailing



December Birthdays

- 6 MICHAEL JACOBS
- 7 SCOTT COLLINS
- 10 JUANITA GIBBS
- 14 NORM DAVID
- 15 SALLY BROTHERS
- 16 KEN DIAMOND
- 21 TOMMY THOMPSON
- 22 MIKE DUCOTE
- 22 HOLLY TASSIN
- 28 BOBBY TASSIN
- 30 HAROLD PECUNIA

**THE CAPTAIN SCHOOL
HELPING MARINERS THROUGH THE MAZE
USCG APPROVED - WE GIVE THE TEST!**

**GET YOUR CHARTER BOAT CAPTAIN'S
LICENSE OR JUST COME TO LEARN TO BE
A BETTER AND SAFER BOATER.
RECENTLY IS WAS REPORTED THAT
LOUISIANA HAS ONE OF THE HIGHEST
FATALITY RATES, ONE OF THE MAIN
REASONS, LACK OF EDUCATION.**

**OUPV (aka six – pack)
MASTERS – TOWING ASSISTANCE – SAIL
AUXILIARY**

**CALL FOR COURSE SCHEDULES
TERRY FITZGERALD
(985) 290-5696 or (877) 435-3187**



**SUSAN JOBST, CRS, GRI
REALTOR®
www.prudentialgardner.com**



Prudential

Gardner, REALTORS®
1300 Gause Boulevard, Slidell, LA 70458
Bus: (985) 641-1201 / Fax: (985) 641-1276
Cell: (985) 640-1666 / 1 800 745-0766 (24)
E-mail: jobstw@bellsouth.net



© 2008 Prudential Real Estate Services, Inc. All rights reserved. Prudential Real Estate Services, Inc. is a registered trademark of Prudential Real Estate Services, Inc.



DON'T FORGET.....

The first Friday night of each month is Birthday Night. If you have a birthday during the month, come on out and let us help you celebrate it.

If you have a birthday this month and you are not on the list, please let Sandy McPeck know.

155 Robert St. • Olde Towne • Slidell, LA 70458
985-649-9515 (bus) • 985-649-9518 (fax)

 **POSTAL PLUS**
Your Shipping & Business Services Headquarters

**\$1.00 OFF OF ANY ORDER
OF \$5.00 OR MORE!**

Mon-Fri- 8:30am-5:30pm • Sat. 10-2

Burt Kemp
Chef / Owner

burt.kemp@jambalayaco.com
www.jambalayaco.com
985.960.2897
Slidell, Louisiana

The logo is circular with a white border. Inside the circle, the text "JAMBALAYA & CO." is written in a dark, serif font along the top arc. The bottom arc contains the text "cajun creole seafood & smoked meats" in a smaller, sans-serif font. In the center of the logo is a stylized illustration of a crocodile's head, facing left. The crocodile has a pinkish-red interior mouth, yellow teeth, and a white tongue. Its body is dark grey or black.

Allstate.
You're in good hands.

Kenneth C. Gibbs
Exclusive Agent
LUTC Graduate

Allstate Insurance Company
1501 Gause Blvd., Ste. 7
Slidell, LA 70458

Phone 985.641.8135
Home 985.649.2007
Fax 985.643.2681
Email a58470@allstate.com

24-Hour Customer Service



**BAY
MARINE
GROUP**

A Division of Bay Sails, Inc.

YACHT & BOAT SALES

POWER & SAIL



*Bay
Sails inc.*

104 Marina Del Ray Blvd.
Madisonville, LA 70447
Ph 985-845-9837
Fax 985-845-9837
Marina Del Ray
<http://www.baymarine.com>



**YACHT & NAUTICAL
CENTER**

Embroidered Apparel
Personalized Nautical Gifts
Ship's Store

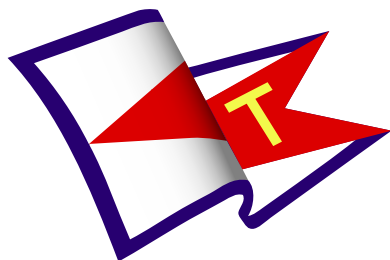


Mary Boshart - Vice President

 **Northshore Marine**
Sales & Services Inc.

261 Atalin St., Mandeville, LA 70448
northshoremarine.net

Phone (985) 626-7847 Fax (985) 624-4830



Upcoming Events

December 2008

Sunday	Monday	Tuesday	Wednesday	Thursday	Friday	Saturday
	1	2	3	4 First Mates Board Mtg.	5 General Election	6 First Mates Xmas Party at Jasmines
7	8 Board Meeting	9	10	11	12	13
14	15	16	17	18	19	20 Boat Parade
21	22	23	24	25 Christmas	26	27
28	29	30	31 New Years Eve Commodore's Ball			

Make sure the following events are in your calendar. A full listing of all events happening at the club can be found online at <http://www.tammanyachtclub.org>. If you would like to submit your event to the calendar, please email zagnut003_5@yahoo.com.



A Special Thank You To:



4978 Pontchartrain Drive, Slidell LA 70458 - 985-646-2028

Sponsor of Tammany Yacht Club's Junior Sailing



TYMELESS FLOORING



LA State License # 41413

Over 25 Yrs Experience in Residential & Commercial
Area Rugs ~ Cabinets ~ Carpet ~ Ceramic Tile
Granite ~ Hardwood Flooring ~ Natural Stone



www.tymeless.com

Quality Products by Knowledgeable Professionals
 Visit either Location in Slidell LA

**Licensed
Insured**

DESIGNER SHOWROOM
3769 PONTCHARTRAIN DRIVE
985-661-8700

SHOWROOM & WAREHOUSE
1345 WEST GAUSE BLVD
985-641-4342

Sponsor of Tammany Yacht Club's Junior Sailing

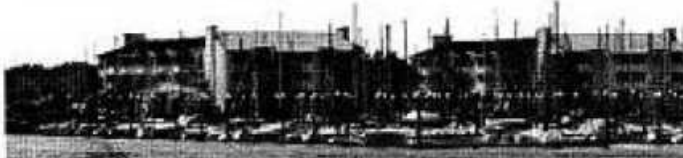




Oak Harbor

OAK HARBOR MARINA

at EDEN ISLES on Lake Pontchartrain • Slidell, Louisiana



NOW OPEN

Clean Restrooms
Laundry room

Transients Welcome
Annual, Monthly, or Weekly
(985) 641-1044



Ullman Sails - Gulf Coast

David Bolyard

West Wind Sails, LLC
1350 Orleans Street • Suite D
Mandeville, Louisiana 70448

Phone 985-626-5638
Fax 985-626-9173
westwindsails@bellsouth.net



Kathy Hebert
RE/MAX Properties

LET ME HELP YOU WITH YOUR NEXT MOVE



Specialist for all of
your real estate needs....
Buying, Selling
or Relocating
Kathy can help you



Direct: 985-788-3328 Fax: 985-646-2612
Slidell Resident - Years of Experience



TYC Board of Directors

Commodore	Jim Ilgenfritz
Vice Commodore	Carl Ritzmann
Rear Commodore	Kevin Blank
Secretary	Rae Ann Normand
Treasurer	Anil Raj
Member at Large	Martin Smith
Member at Large	Sonny Brennan
Member at Large	Wayne Russ
Past Commodore	Harley McPeck

TYC Committee Chairpersons

Membership	Martin Smith
Entertainment	Val Monahan
Finance	Kyle Bowser
First Mates (President)	Ann Courrage
House	Scott Collins
Race Committee	Kyle Bowser
GYA Offshore Council	Karl Boehm
GYA One Design	Kevin Blank
GYA PHRF	Mark Palermo
Juniors & Flying Scot	K. Bowser / K. Blank
Long Range Planning	Jim Ilgenfritz
LPRC Reps	Kyle Bowser, Kenny LaNata
LPRC Activities	Tommy Thompson
Club Merchandise	
Nominating	Jim Richardt
Cruising	Bill and Susan Jobst
Member Photo	Sandy McPeck
Rules Committee	Martin Smith
Telephone	Dodie Jones
SpyGlass Editor	Kevin Blank
SpyGlass Distribution	Kevin Blank
Webmaster	Kevin Blank
Chaplain	Rev. Dick Almos
Fleet Surgeon	Dr. Bobby Tassin

Tammany Yacht Club Hours

Monday & Tuesday - Closed
 Wednesday - Thursday - 5pm to 10pm
 Friday - 5pm to 11pm
 Saturday - 2pm to 11pm
 Sunday - 1pm till 9pm

Club hours may be extended at the discretion of the Club Manager or the ranking Board Member.

Don't forget that on Thursdays, your second drink is free and either a light supper or hors d'oeuvres are frequently served. Also, be sure to sign up for Friday night dinners by Thursday evening and cancel if your can't make it to avoid a penalty.

TYC Phone: 985-649-5222

Deadline for submission to the SpyGlass is the 24th of each month.

Please send your submissions via email to
 zagnut003_5@yahoo.com

SpyGlass Adertising Rates

Business Card - \$10/Month
 Quarter Page - \$20/Month
 Half Page - \$40/Month
 Full Page - \$80/Month

TYC Contact Info

Phone: 985-649-5222

Fax: 985-646-2612

Email: comments@tammanyachtclub.org

Web: <http://www.tammanyachtclub.org>